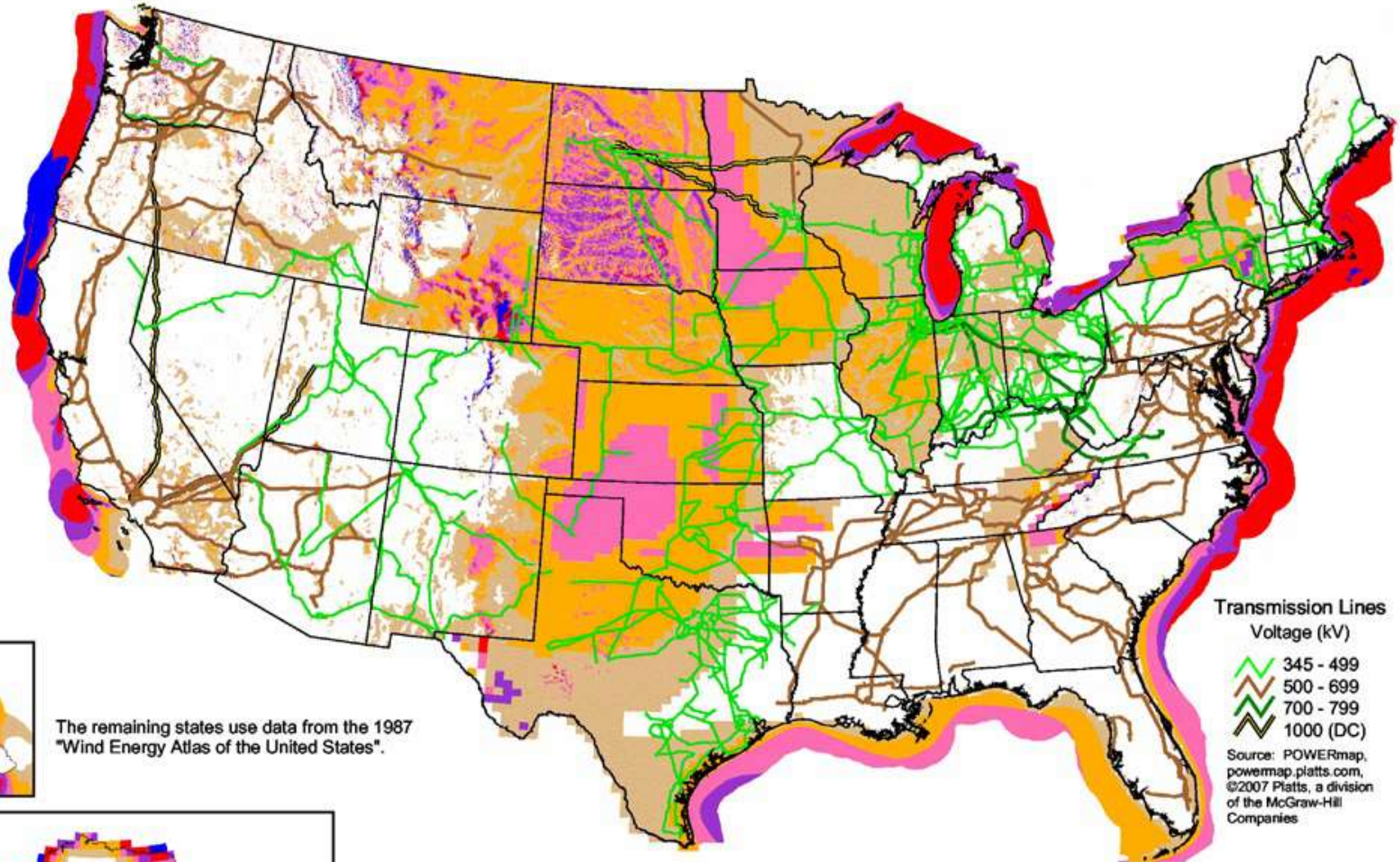


NREL Updated Maps:

- Arizona (2003)
- California (2002)
- Colorado (2004)
- Connecticut (2001)
- Delaware (2002)
- Hawaii (2004)
- Idaho (2002)
- Illinois (2001)
- Indiana (2004)
- Maine (2001)
- Maryland (2002)
- Massachusetts (2001)
- Michigan (2004)
- Missouri (2005)
- Montana (2002)
- Nebraska (2005)
- Nevada (2003)
- New Jersey (2002)
- New Hampshire (2001)
- New Mexico (2003)
- North Carolina (2002)
- North Dakota (2000)
- Ohio (2004)
- Oregon (2002)
- Pennsylvania (2002)
- Rhode Island (2001)
- South Dakota (2001)
- Texas mesas (2000)
- Utah (2003)
- Vermont (2001)
- Virginia (2002)
- Washington (2002)
- West Virginia (2002)
- Wyoming (2002)

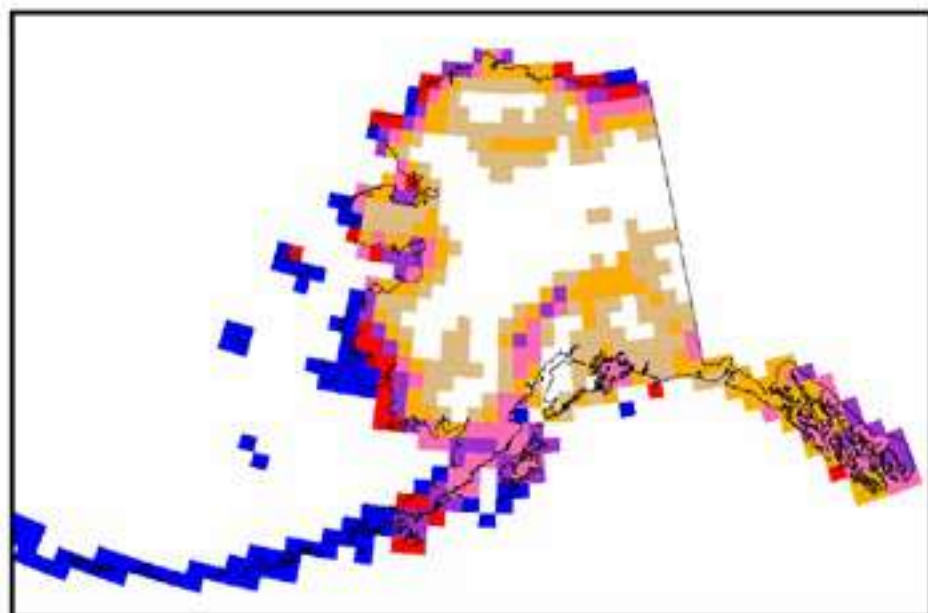
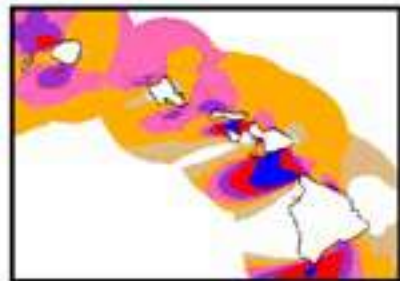


Transmission Lines
Voltage (kV)

- 345 - 499
- 500 - 699
- 700 - 799
- 1000 (DC)

Source: POWERmap, powermap.platts.com, ©2007 Platts, a division of the McGraw-Hill Companies

The remaining states use data from the 1987 "Wind Energy Atlas of the United States".



Wind Power Classification

Wind Power Class	Resource Potential	Wind Power Density at 50 m W/m^2	Wind Speed ^a at 50 m m/s	Wind Speed ^a at 50 m mph
	2 Marginal	200 - 300	5.6 - 6.4	12.5 - 14.3
	3 Fair	300 - 400	6.4 - 7.0	14.3 - 15.7
	4 Good	400 - 500	7.0 - 7.5	15.7 - 16.8
	5 Excellent	500 - 600	7.5 - 8.0	16.8 - 17.9
	6 Outstanding	600 - 800	8.0 - 8.8	17.9 - 19.7
	7 Superb	800 - 1600	8.8 - 11.1	19.7 - 24.8

^a Wind speeds are based on a Weibull k value of 2.0

U.S. Department of Energy
National Renewable Energy Laboratory